

**Welcome to Tippmann – The premier manufacturer of high performance paintball markers and accessories since 1986**

Heading into our 22nd year, Tippmann is extremely excited about the new products that will be launched in 2008.

First, did you ever think Denny Tippmann Jr. could take the best selling marker of all time and make it even better? The 98 Custom has been around for years, but the 98 Custom Platinum Series will have a different look in 2008 with eight new exciting upgrades. The biggest change is the newly engineered split receiver design which makes the new 98 Custom easier to upgrade, modify and clean. We also upgraded the Flatline barrel system with a quick thread design so adding this upgrade or any other modification now takes only seconds to complete!

Second, to continue the momentum of the X7, which took woodsball by storm last year with its faster Cyclone, lightweight magnesium receiver and countless looks, we have added a new series of mods and will continue to support the X7 as the official marker of many events and teams. The A-5, which set the standard for woodsball markers with its patented Cyclone Feed System and field strippable design, has been repositioned and is now more affordable than ever.

Third the fruits of the alliance between Tippmann and the US Army are unveiled with the new Alpha Black marker and M16 Style mod kit. The US Army line of products, which also includes accessories and paint, targets the entry level player looking for quality and value in a brand they trust. This new line of markers and accessories are featured in their own unique catalog on can be seen on the new [usarmypaintball.com](http://usarmypaintball.com) web site

And finally to support our leadership position in quality and durability, now all Tippmann markers come with an industry leading 2-year parts and service warranty. Would you expect anything less from Tippmann?

***From the US Army for the entry level player to the X7 for the serious woodsball player, Tippmann has what you need and stands behind it with unmatched customer service.***

X7 MARKER, MODS AND ACCESSORIES	02 – 11
A-5 MARKERS, MODS AND ACCESSORIES	12 – 24
98 CUSTOM / CUSTOM PRO MARKERS	25 – 35
FIELD RENTAL MARKER	36 – 37
98 CUSTOM MARKERS, MODS AND ACCESSORIES	38 – 43
GENERAL ACCESSORIES AND CLOTHING	44 - 48



**WWW.TIPPMANN.COM**  
**WWW.USARMYPAINBALL.COM**



# X7™



The X7 is the world's most customizable marker ever made. This next generation woodsball marker features over 30 mods, a thousand looks and built in features including a lightweight magnesium receiver, a new Cyclone EP Feed System, a low profile offset hopper and many other upgrades for unmatched style and performance right out of the box.

# A-5®



With its genuine military appearance and reliable performance, the A-5® line is all about speed and upgradeability. The A-5® features the patented Cyclone Feed System that can feed up to 17 balls per second and can be easily field stripped in less than 60 seconds. The A-5® continues to set the standard for scenario players wanting superior reliability and customization.

# NEW

## 98 CUSTOM® PRO PLATINUM SERIES



The New 98 Custom Pro Platinum series with its built in upgrades provides enhanced speed and accuracy. The 98 Custom Pro Platinum Series comes standard with an 11-inch high-performance barrel for better accuracy, a double-trigger for faster firing and a drop forward for better balance. Combined with A.C.T. (Anti-Chop-Technology) and new split receiver design the 98 Custom Pro Platinum Series has the performance features wanted by seasoned players.

# NEW

## 98 CUSTOM® PLATINUM SERIES



For the beginner or seasoned pro, the New 98 Custom Platinum Series Marker line maintains the reliability and durability you have come to expect from Tippmann and with the new split receiver design it is even easier to customize, maintain, and upgrade.

# NEW

## FIELD RENTAL MARKER



The Tippmann 98 Rental Platinum Series marker features an extra durable acrylic finish, a permanent laser etched "Rental" marking and is easily upgradeable with all 98 Custom Platinum Series accessories. The new split receiver design makes cleaning and maintenance quick and easy. The 98 Rental Platinum Series is also available in A.C.T. (Anti-Chop-Technology) which virtually eliminates ball chopping.

# TIPPMANN® 2008





# BASIC

## THE MARKER WITH A THOUSAND LOOKS AND INSANE PERFORMANCE

### X7 SEMI AUTO

- SEMI-AUTOMATIC, .68 CALIBER
- THE MOST CUSTOMIZABLE MARKER EVER MADE WITH A THOUSAND DIFFERENT LOOKS.
- MAGNESIUM RECEIVER IS EXTREMELY LIGHTWEIGHT AND DURABLE
- NEW CYCLONE EP (ENHANCED PERFORMANCE) SYSTEM FEEDS UP TO 20BPS
- AIR-THRU STOCK COMPATIBLE SYSTEM ELIMINATES GAS LINE UNDER THE MARKER
- LOW PROFILE, OFFSET HOPPER FOR CLEAR SITE LINE
- MODULAR SHROUD WITH FOUR RAILS TO ADD ON SIGHTS AND SCOPES
- AR15 STYLE MAGAZINE WITH BUILT IN TOOL STORAGE
- PICATINNY TOP RAIL TO EASILY ADD NEW RISERS, SIGHTS OR HANDLES
- UPGRADED ADJUSTABLE REAR SITE HELPS WITH LONG RANGE AIMING
- PUSH PIN DESIGN FOR EASY FIELD STRIPPING AND ACCESSORY ADD ONS
- INCLUDES MAINTENANCE PACK, BARREL SLEEVE, AND GUN OIL

OFFSET HOPPER FOR CLEAR VIEW

8 1/2" STONE HONED BARREL  
150ft EFFECTIVE RANGE



NEW CYCLONE EP DELIVERS UP TO 20 BPS WITHOUT BATTERIES

#### MODEL T110101 - BLACK IN CARTON

Individual Carton - 22" x 13.75" x 4.5"  
Master Carton (5-Pack) - 26" x 17" x 17"  
Weight - 24.3 lbs. Cube - 4.10  
UPC - 6-69966-99-2165

#### MODEL T110102 - BLACK IN CARTON

Individual Carton - 22" x 13.75" x 4.5"  
Master Carton (5-Pack) - 26" x 17" x 17"  
Weight - 25.1 lbs. Cube - 4.10  
UPC - 6-69966-99-2172

#### MODEL T110103 - BLACK IN CARTON

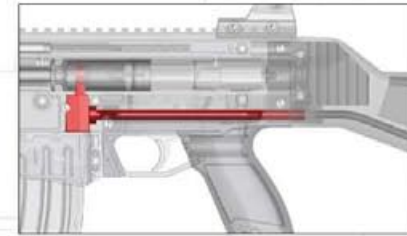
Individual Carton - 22" x 13.75" x 4.5"  
Master Carton (5-Pack) - 26" x 17" x 17"  
Weight - 24.6 lbs. Cube - 4.10  
UPC - 6-69966-99-2189



## OVER 30 MODS AVAILABLE.

# MODULAR DESIGN IS EASY TO UPGRADE

LOW PROFILE OFFSET HOPPER  
FOR CLEAR SITE LINES



AIR-THRU STOCK  
COMPATIBLE SYSTEM

LIGHTWEIGHT, DURABLE  
MAGNESIUM RECEIVER

PUSHPIN CONSTRUCTION  
FOR FIELD STRIPPING

MODULAR SHROUD  
WITH 4 RAILS

FRONT COCKING  
KNOB FOR FULLY  
ENCLOSED INTERNALS

HEAVY DUTY STEEL  
BRAIDED RUBBER  
COATED GASLINE

FULLY COMPATIBLE FOR CO<sub>2</sub>,  
COMPRESSED AIR OR NITROGEN



AR15 STYLE MAG WITH  
BUILT IN TOOL STORAGE





# MODS

**NEW**

UMP



AK 47



XP5



X36



M16



XP5SD



**BUILD YOUR OWN X7 BY MIXING OR MATCHING MODS FROM THESE SIX POPULAR STYLES**

# BARRELS AND TRIGGERS



## E-GRIP ELECTRONIC UPGRADE KIT

- **5 FIRING MODES!**  
SEMI-AUTOMATIC, TURBO, 3-SHOT SAFETY BURST, AUTO RESPONSE, FULL SAFETY-AUTO
- FOR RAPID FIRING UP TO 20 BALLS PER SECOND
- EXTERNAL SELECT FIRE HALL-EFFECT DESIGN
- REQUIRES 9 VOLT BATTERY (NOT INCLUDED)

**MODEL T210001**  
Individual Carton - 6.25" x 6.25" x 1.25"  
Master Carton (6-Pack) - 6.5" x 6.5" x 7.75"  
Weight - 4.9 lbs. Cube - 0.19  
UPC - 6-69966-99-2196



## DOUBLE TRIGGER KIT

- **INCREASES TRIGGER SPEED**
- **ERGONOMIC DESIGN HELPS PREVENT FATIGUE**

**MODEL T210005**  
Individual Carton - 4" x 6" x 1"  
Individual Carton Weight - 0.06 lbs.  
Master Carton (6-Pack) - 4.25" x 6.25" x 6.25"  
Weight - 0.9 lbs. Cube - 0.1  
UPC - 6-69966-99-6415

## PATENTED FLATLINE® BARREL SYSTEM

### TOP-OF-THE-LINE BARREL UPGRADE!

- **PATENTED TECHNOLOGY CREATES BACKSPIN FOR LEVEL & ACCURATE SHOTS**
- **DESIGNED FOR RANGE & ACCURACY**
- **FARTHEST SHOOTING BARREL ON THE MARKET**
- **INCLUDES WIDE MOUTH BARREL SLEEVE**

**MODEL T210002**  
Individual Carton - 5.75" x 11.75" x 5.75"  
Master Carton (6-Pack) - 6" x 12" x 16.75"  
Weight - 8.3 lbs. Cube - 0.70  
UPC - 6-69966-99-2202



## RESPONSE TRIGGER KIT

- **PATENTED FOR RAPID AIR-ASSISTED FIRING UP TO 15 ROUNDS/SECOND**

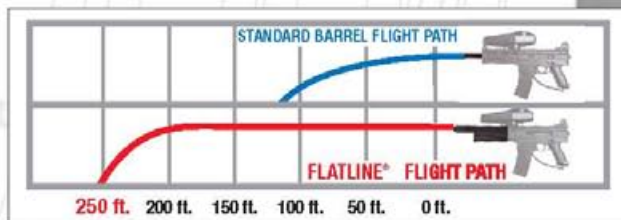
**MODEL T210006**  
Individual Clamshell - 6.25" x 6.25" x 1.25"  
Individual Clamshell Weight - 0.34 lbs.  
Master Carton (6-Pack) - 6.5" x 6.5" x 7.75"  
Weight - 3 lbs. Cube - 0.19  
UPC - 6-69966-99-6439



## 14" PATHFINDER BARREL

- **HONED AND PORTED FOR IMPROVED ACCURACY**
- **LIGHTWEIGHT ALUMINUM CONSTRUCTION**
- **RECOMMENDED FOR USE WITH AK47, X36 AND SP5SD SHROUDS**

**MODEL T210015**  
UPC - 6-69966-99-4619







# STOCKS

## AIR THRU COMMANDO

*CONSTRUCTED FROM MILITARY GRADE GLASS FILLED NYLON FOR DURABILITY, ATTACHMENT POINT IS MADE FROM HIGH GRADE ALUMINUM PROVIDES UNMATCHED DURABILITY AND ELIMINATES WOBBLE*

- *INTEGRATED HIGH-PRESSURE AIR LINE SEALS DIRECTLY TO THE MARKER'S AIR SYSTEM, ALLOWING EASY "PLUG AND PLAY" OPERATION*
- *ERGONOMIC DESIGN & PREMIUM CONSTRUCTION*
- *CARVED-OUT GROOVE ENHANCES THE SHOOTER'S SIGHTLINE*
- *IDEALLY ANGLED QUICK-DISCONNECT AIR*

MODEL T275047



### AK-47



### XP5



### XP5SD



**THE COMMANDO STOCK IS USED FOR THE AK47, XP5 AND THE XP5SD STYLE MARKERS**

# X36 FOLDING

*CONSTRUCTED FROM MILITARY GRADE GLASS FILLED NYLON FOR DURABILITY, ATTACHMENT POINT IS MADE FROM HIGH GRADE ALUMINUM PROVIDES UNMATCHED DURABILITY AND ELIMINATES WOBBLE*

- PROVIDES STABLE MIL-SIM SHOOTING PLATFORM AND ENHANCES ACCURACY
- FOLDED STOCK OPTIMIZES PERFORMANCE IN CLOSE QUARTER COMBAT
- CONVENIENT & RELIABLE IN THE FIELD
- EASY INSTALLATION & SOLID ATTACHMENT POINT

MODEL T275044



# COLLAPSIBLE CARSTOCK

*BUTT STOCK IS CONSTRUCTED FROM MILITARY GRADE GLASS FILLED NYLON FOR DURABILITY. ATTACHMENT POINT AND POSITIONING TUBE ARE CONSTRUCTED FROM HIGH GRADE ALUMINUM PROVIDING UNMATCHED DURABILITY AND ELIMINATING WOBBLE*

- OFFERS SIX DIFFERENT POSITIONS
- EASILY ADJUSTABLE DURING PLAY
- HIGH-STRENGTH, WEATHERPROOF CONSTRUCTION
- RANGES IN LENGTH FROM 7 INCHES TO 11 INCHES

MODEL T275046







# SHROUDS / FOREGRIPS

## 2" TAC RAIL KIT

### UMP



- GLASS-FILLED NYLON COMPOSITE CONSTRUCTION FOR DURABILITY
- INCLUDES SIGHT, END CAP AND BOTTOM RAIL MOUNT

MODEL T275045

### AK47



- GENUINE MIL-SIM LOOKS & DURABILITY
- FREE-FLOATING DESIGN (ATTACHES FIRMLY WITHOUT THE USE OF SET SCREWS)
- CONTAINS PRE-MOLDED RAIL SLOTS
- ATTACHES EASILY & SECURELY

MODEL T275048

### XP5



- GLASS-FILLED NYLON COMPOSITE CONSTRUCTION
- ACCOMMODATES 2-INCH BOTTOM RAIL MOUNT
- INCLUDES SIGHT AND END CAP

MODEL T275049



- EASY CONVENIENT WAY TO ADD ACCESSORIES
- CONSTRUCTED OF GLASS FILLED NYLON FOR DURABILITY
- FOR USE WITH AK47, XP5, AND X36 FOREGRIPS

MODEL #T276064 (SET OF 2)

*Note: Because of the length of the X7 AK-47 foregrip, a minimum barrel length of 14-inches is recommended.*

### XP5-SD SHROUD



- VERSATILE, TWO-PIECE CONSTRUCTION ALLOWS YOU TO RUN WITH TWO DISTINCT MIL-SIM LOOKS
- SHROUD CAN EASILY BE "UNLOCKED" AND REMOVED (OR REATTACHED) IF DESIRED
- INCLUDES FOREGRIP END CAP

MODEL T275052

### X36



- ACCOMMODATES UP TO SIX RAIL MOUNTS
- CONTAINS PRE-MOLDED RAIL SLOTS
- FREE-FLOATING DESIGN (ATTACHES FIRMLY WITHOUT THE USE OF SET SCREWS)

MODEL T275051

*Note: Because of the length of the X7 X36 foregrip, a minimum barrel length of 14-inches is recommended.*

### M16



- GREAT LOOKS, FUNCTIONALITY & DURABILITY
- INCLUDES TWO RAILS
- FREE-FLOATING DESIGN (ATTACHES FIRMLY WITHOUT THE USE OF SET SCREWS)

MODEL T275050

*Note: For optimum mil-sim looks, a minimum barrel length of 14 inches is recommended.*

**NEW**



# MAGAZINES

## UMP



- MADE FROM HIGH-IMPACT COMPOSITE, THE UMP MAG IS STRONG ENOUGH TO BE USED AS A GRIP
- FEATURES PUSH-BUTTON RELEASE
- FITS STOCK X7 MAG WELL

MODEL T275043

## AK47



- MADE FROM HIGH-IMPACT COMPOSITE, THE AK47 MAG IS STRONG ENOUGH TO BE USED AS A GRIP
- FEATURES PUSH-BUTTON RELEASE
- FITS STOCK X7 MAG WELL

MODEL T275053

## XP5 STRAIGHT



- MADE FROM HIGH-IMPACT COMPOSITE, THE XP5 MAG IS STRONG ENOUGH TO BE USED AS A GRIP
- FEATURES PUSH-BUTTON RELEASE
- FITS 9MM MAG WELL (SOLD SEPERATLY)

MODEL T275054

XP5 9MM MAG WELL

- FITS XP5 MAGS

MODEL T275063



## M16



- MADE FROM HIGH-IMPACT COMPOSITE, THE MAG IS STRONG ENOUGH TO BE USED AS A GRIP
- ULTRA SHORT MAG
- FITS STOCK X7 MAG WELL

MODEL T275055

## X36 SHORTY



- MADE FROM HIGH-IMPACT COMPOSITE, MAG IS STRONG ENOUGH TO BE USED AS A GRIP
- REALISTIC MIL-SIM DESIGN
- MAG IS 4 INCHES IN HEIGHT
- FITS STOCK X7 MAG WELL

MODEL T275056

## XP5 CURVED



- MADE FROM HIGH-IMPACT COMPOSITE, THE XP5 MAG IS STRONG ENOUGH TO BE USED AS A GRIP
- FEATURES PUSH-BUTTON RELEASE
- FITS 9MM MAG WELL (SOLD SEPERATELY)

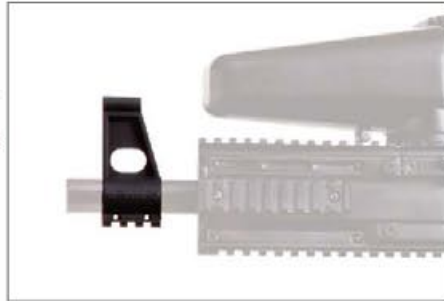
MODEL T275057





# SIGHTS / HANDLES

## AK47 SIGHT



- FEATURES 1-INCH BOTTOM RAIL MOUNT
- FITS ALL STANDARD TIPPMMANN BARRELS
- EXTENDS 2-INCHES ABOVE BARREL
- BUILT TO WITHSTAND RUGGED WOODSBALL PLAY

MODEL T275058

## M16 SIGHT



- FEATURES 1-INCH BOTTOM RAIL MOUNT
- FITS ALL STANDARD TIPPMMANN BARRELS
- EXTENDS 2 INCHES ABOVE BARREL

MODEL T275060

## X36 CARRY HANDLE



- GREAT LOOKS & FUNCTIONALITY
- SIGHT PEEP HOLE & WEAVER RAIL MOUNT
- RAIL CUTOUT ACCOMMODATES HOPPER
- LENGTH AT BASE: 12 INCHES

MODEL T275061

## M16 CARRY HANDLE



- GENUINE MIL-SIM LOOK
- CONSTRUCTED TO PROVIDE A LIFETIME OF RELIABLE PERFORMANCE
- LENGTH AT BASE: 7 INCHES

MODEL T275062

## M16 VERTICAL HANDLE



- ADJUSTABLE PLACEMENT ON WEAVER RAIL
- GENUINE MIL-SIM LOOK
- CONSTRUCTED TO PROVIDE A LIFETIME OF RELIABLE PERFORMANCE

MODEL T275059

# UPGRADES / ACCESSORIES



## LP CYCLONE® HOPPER

- **LOW PROFILE**
- **OFFSET DESIGN**
- **PROVIDES A CLEAN VIEW ALONG TOP OF MARKER**
- **ALSO FITS A5**

### MODEL T210007

Individual Poly Bag  
Mstr. Crt (6pk) 14" x 7" x 4"  
Weight - 0.35 lbs    Cube 0.23

## DELUXE PARTS KIT

### • A FULL RANGE OF REPLACEMENT PARTS

- |                        |                            |
|------------------------|----------------------------|
| (1) FRONT BOLT         | (1) SAFETY O-RING (RED)    |
| (1) FEEDER BOLT        | (2) TRIGGER RETURN SPRINGS |
| (1) BANJO FITTING      | (1) PISTON U-CUP           |
| (1) 1/16 HOSE 1"       | (2) REAR BOLT O-RINGS      |
| (1) TRIGGER SPRING     | (1) BALL LATCH             |
| (1) FRONT BOLT O-RING  | (5) GRIP SCREWS            |
| (1) VALVE WASHER       | (1) VALVE O-RING (LARGE)   |
| (5) TRIGGER PLATE PINS | (6) RECEIVER BOLTS (SHORT) |
| (1) A-5™ BARREL O-RING | (1) TANK VALVE O-RING      |
| (2) RECEIVER PINS      | (2) RECEIVER PIN SPRINGS   |
| (1) LINKAGE ARM        | (1) SEAR PIN               |
| (1) DRIVE SPRING       | (1) DRIVE PIN CA           |
| (6) GRIP NUTS          | (1) FRONT GRIP BOLT        |
| (1) FRONT GRIP NUT     | (1) FRONT GRIP WASHER      |
| (1) VELOCITY SCREW     | (1) A-5™ SAFETY            |

### MODEL T210012

Package: Reusable Container  
Actual contents may change

## UNIVERSAL PARTS KIT

### • A FULL RANGE OF REPLACEMENT PARTS

- (1) FRONT BOLT O-RING
- (1) REAR BOLT O-RING
- (1) PUSH PIN
- (1) BALL LATCH
- (1) VALVE O-RING (LARGE)
- (1) TRIGGER PLATE PIN
- (1) VALVE SPRING WASHER
- (1) VELOCITY SCREW
- (2) BODY NUTS
- (2) RECEIVER BOLTst (SHORT)
- (1) FEEDER RATCHET
- (1) SEAR ROLL PIN
- (1) MARKER OIL
- (1) DRIVE SPRING

### MODEL T210011

Individual Reusable Container - 3" x 5" x 1.5"  
Individual Reusable Container - 0.2 lbs.  
Actual contents may change

## O-RING KIT

### O-RING KIT

### MODEL T210010

Individual Clamshell - 2.75" x 4" x 1"  
Individual Clamshell Weight - 0.02 lbs.  
Mstr. Ctn. (6-Pk) - 3" x 4.25" x 6.75"  
Weight - 1.5 lbs.    Cube - 0.116



# A-5

## BASIC

CYCLONE FEED SYSTEM  
FEEDS UP TO 17 BALLS/SECOND

## A-5<sup>®</sup> SEMI-AUTO

- SEMI-AUTOMATIC, .68 CALIBER
- PATENTED CYCLONE FEEDER,  
NO ELECTRONIC HOPPER NEEDED!
- 8½" STONE-HONED  
HIGH PERFORMANCE BARREL
- EASY ACCESS, REMOVABLE GRIP FRAME
- FIELD STRIPS & REASSEMBLES  
IN LESS THAN 60 SECONDS
- WIDE RANGE VELOCITY ADJUSTMENT SCREW
- HEAVY DUTY STAINLESS STEEL BRAIDED GAS LINE
- DURABLE BLACK FINISH
- 150+ FT. EFFECTIVE RANGE;  
LIGHT WEIGHT TRIGGER PULL

INCLUDES MAINTENANCE PACK:  
ALLEN WRENCH SET, SPARE TANK O-RING,  
MARKER LUBRICANT, BARREL SLEEVE

### MODEL T101010 – BLACK IN CARTON

Individual Carton - 22" x 13.75" x 4.5"  
Individual Carton Weight - 4.57 lbs.  
Master Carton (5-Pack) - 22.25" x 14" x 22.75"  
Weight - 24.3 lbs. Cube - 4.10  
UPC - 6-69966-99-3353

### MODEL T101011 – BLACK IN CLAMSHELL

Individual Clamshell - 21.5" x 12" x 5.5"  
Individual Clamshell Weight - 4.36 lbs.  
Master Carton (5-Pack) - 21.75" x 12.25" x 27.75"  
Weight - 23.3 lbs. Cube - 4.28  
UPC - 6-69966-99-3308



### MODEL T101019 – E-GRIP BLACK IN CARTON

Individual Carton - 22" x 13.75" x 4.5"  
Individual Carton Weight - 4.72 lbs.  
Master Carton (5-Pack) - 22.25" x 14" x 22.75"  
Weight - 25.1 lbs. Cube - 4.10  
UPC - 6-69966-99-3803



### MODEL T101015 – RESPONSE<sup>®</sup> BLACK IN CARTON

Individual Carton - 22" x 13.75" x 4.5"  
Individual Carton Weight - 4.61 lbs.  
Master Carton (5-Pack) - 22.25" x 14" x 22.75"  
Weight - 24.6 lbs. Cube - 4.10  
UPC - 6-69966-99-3506

## A-5<sup>®</sup> POWER PACK FEATURES:

- A-5<sup>®</sup> MARKER & MAINTENANCE PACK
- HIGH PERFORMANCE GOGGLE WITH ANTI-FOG LENS
- 12 OZ. CO<sub>2</sub> TANK

### MODEL T101022 – BLACK IN CARTON

Individual Carton - 28.5" x 13.5" x 4.5"  
Individual Carton Weight - 7.13 lbs.  
Master Carton (5-Pack) - 28.9" x 13.75" x 22.75"  
Weight - 37.0 lbs. Cube - 5.23  
UPC - 6-69966-99-3605

8 ½" HIGH PERFORMANCE BARREL





FRONT COCKING  
KNOB FOR FULLY  
ENCLOSED INTERNALS

FIELD STRIPPING  
PUSH PINS

SEMI-AUTOMATIC WITH  
OPEN BOLT BLOW BACK ACTION

SHOCK ABSORBING  
END CAP  
REDUCES WEAR  
AND RECOIL

**TIPPMANN**

**A-5**  
MADE IN THE U.S.A.

PUSH SAFE

FRONT GRIP CAN BE ADJUSTED FOR  
COMFORT OR REMOVED TO ADD  
CUSTOMIZABLE FEATURES

FULLY COMPATIBLE FOR CO2,  
COMPRESSED AIR OR NITROGEN



200 ROUND WIDE MOUTH HOPPER  
(INCLUDED)

TIPPMANN'S FAST SHOOTING A-5  
IS THE WORLD'S MOST POPULAR  
MILITARY STYLE SCENARIO MARKER.

**TIPPMANN®**



# A-5

## DIGI CAMO BASIC

CYCLONE FEED SYSTEM  
FEEDS UP TO 17 BALLS/SECOND

### A-5® CAMO

- SEMI-AUTOMATIC, .68 CALIBER
- PATENTED CYCLONE FEEDER,  
NO ELECTRONIC HOPPER NEEDED!
- 8½" STONE-HONED  
HIGH PERFORMANCE BARREL
- EASY ACCESS, REMOVABLE GRIP FRAME
- FIELD STRIPS & REASSEMBLES  
IN LESS THAN 60 SECONDS
- WIDE RANGE VELOCITY ADJUSTMENT SCREW
- HEAVY DUTY STAINLESS STEEL BRAIDED GAS LINE
- DURABLE NEW DIGI CAMO FINISH
- 150+ FT. EFFECTIVE RANGE;  
LIGHT WEIGHT TRIGGER PULL

**INCLUDES MAINTENANCE PACK:**  
ALLEN WRENCH SET, SPARE TANK O-RING,  
MARKER LUBRICANT, CLEANING CABLE,  
BARREL SLEEVE

#### MODEL T101017 – CAMOUFLAGE IN CARTON

Individual Carton - 22" x 13.75" x 4.5"  
Individual Carton Weight - 4.57 lbs.  
Master Carton (5-Pack) - 22.25" x 14" x 22.75"  
Weight - 24.3 lbs. Cube - 4.10  
UPC - 6-69966-99-3759

# NEW DIGI CAMO

8 ½" HIGH PERFORMANCE BARREL



**DIGI CAMO – THE MOST POPULAR CAMO STYLE IN USE TODAY!**  
IT FEATURES A WEATHERPROOF FINISH THAT IS APPLIED AS A  
POWDER COAT TO RESIST FADING AND SCRATCHES.



200 ROUND WIDE MOUTH HOPPER  
(INCLUDED)



**FRONT COCKING KNOB  
ALLOWS FOR FULLY  
ENCLOSED RECEIVER**

**SEMI-AUTOMATIC RECEIVER  
WITH OPEN BOLT BLOW BACK**

**FIELD STRIPPING  
PUSH PINS**

**SHOCK ABSORBING  
END CAP  
REDUCES WEAR  
AND RECOIL**

**FRONT GRIP CAN BE ADJUSTED FOR  
COMFORT OR REMOVED TO ADD  
CUSTOMIZABLE FEATURES**

**FULLY COMPATIBLE FOR CO2,  
COMPRESSED AIR OR NITROGEN**

**TIPPMANN**  **A-5**   
MADE IN THE U.S.A.

PUSH SAFE



# A-5

# STEALTH

**CYCLONE FEED SYSTEM  
FEEDS UP TO 17 BALLS/SECOND**



**PATENTED FLATLINE® BARREL SYSTEM  
FOR LONGER, MORE ACCURATE SHOTS**



## A-5 STEALTH

- SEMI-AUTOMATIC, .68 CALIBER
- PATENTED CYCLONE FEEDER,  
NO ELECTRONIC HOPPER NEEDED!
- PATENTED FLATLINE® BARREL SYSTEM
- COLLAPSIBLE STOCK FOR  
ADDED PERFORMANCE & COMFORT
- EASY ACCESS, REMOVABLE GRIP FRAME
- FIELD STRIPS & REASSEMBLES  
IN LESS THAN 60 SECONDS
- WIDE RANGE VELOCITY ADJUSTMENT SCREW
- 250+ FT. EFFECTIVE RANGE;  
LIGHT WEIGHT TRIGGER PULL.
- DURABLE BLACK FINISH

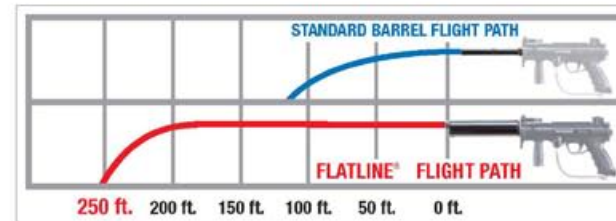
**INCLUDES MAINTENANCE PACK:**  
ALLEN WRENCH SET, SPARE TANK O-RING,  
MARKER LUBRICANT, CLEANING CABLE, BARREL SLEEVE

**MODEL T101021 – BLACK IN CARTON**  
Individual Carton - 28.5" x 13.5" x 4.5"  
Individual Carton Weight - 6.57 lbs.  
Master Carton (3-Pack) - 28.75" x 13.75" x 13.75"  
Weight - 21.2 lbs. Cube - 3.15  
UPC - 6-69966-99-3964

## BUILT IN UPGRADES!

- FLATLINE® BARREL
- COLLAPSIBLE STOCK
- REMOTE LINE

## FLATLINE® BARREL PERFORMANCE



**200 ROUND WIDE MOUTH HOPPER  
(INCLUDED)**

FRONT COCKING  
KNOB FOR FULLY  
ENCLOSED RECEIVER

FIELD STRIPPING  
PUSH PINS

COLLAPSIBLE STOCK WITH  
3 ADJUSTABLE POSITIONS

**TIPPMANN**

A-5  
MADE IN THE U.S.A.

PUSH SAFE

FRONT GRIP CAN BE ADJUSTED  
FOR COMFORT OR REMOVED TO  
ADD CUSTOMIZABLE FEATURES

FULLY COMPATIBLE FOR CO<sub>2</sub>,  
COMPRESSED AIR OR NITROGEN

REMOTE LINE

**TIPPMANN**



# A-5™

## BARRELS



### FLATLINE® BARREL SYSTEM

#### TOP-OF-THE-LINE BARREL UPGRADE!

- *PATENTED TECHNOLOGY CREATES BACKSPIN FOR LEVEL & ACCURATE SHOTS*
- *DESIGNED FOR RANGE & ACCURACY*
- *FARTHEST SHOOTING BARREL ON THE MARKET, SHOOTS UP TO 250FT.*
- *INCLUDES WIDE MOUTH BARREL SLEEVE*

#### MODEL O2-FL

Individual Clamshell - 5.75" x 11.75" x 2.75"  
 Individual Clamshell Weight - 1.216 lbs.  
 Master Carton (6-Pack) - 6" x 12" x 16.75"  
 Weight - 8.3 lbs. Cube - 0.7  
 UPC - 6-69966-99-4633



### FLATLINE® W/BATTLE SHROUD

- *FEATURES 4 MILITARY STYLE MOUNTING RAILS*
- *ADD MODS SUCH AS SIGHTS, LASERS, SCOPES AND OTHERS*
- *FARTHEST SHOOTING BARREL ON THE MARKET, SHOOTS UP TO 250FT.*
- *INCLUDES WIDE MOUTH BARREL SLEEVE*

#### MODEL T201022

UPC - 6-69966-99-4770

Individual Tube - 5.75" x 11" x 5.75"  
 Master Carton (6-Pack) - 6" x 12" x 16.75"  
 Weight - 8.3 lbs. Cube - 0.70



### 14" PATHFINDER BARREL

- *HONED AND PORTED FOR IMPROVED ACCURACY*
- *LIGHTWEIGHT ALUMINUM CONSTRUCTION*

#### MODEL T210015

UPC - 6-69966-99-4619



### SNIPER BARRELS

#### SUPERIOR PERFORMANCE!

- *MICRO-HONED & POLISHED INSIDE FOR PRECISION & ACCURACY*
- *IMPROVES ACCURACY OVER STANDARD BARREL*
- *TOUGH ANODIZED FINISH*
- *LIGHTWEIGHT, DURABLE ALUMINUM CONSTRUCTION*
- *FITS X7 MARKER*

#### MODEL

14" - T201010 UPC - 6-69966-99-4688  
 16" - T201011 UPC - 6-69966-99-4695

Individual Tube - 4.75" x 16" x 1.125"  
 Individual Carton Weight - 6.57 lbs.  
 Master Carton (3-Pack) - 5" x 16.25" x 7"  
 Weight - 21.2 lbs. Cube - 3.15

# TRIGGERS



## E-GRIP™ ELECTRONIC UPGRADE KIT

### • 5 FIRING MODES!

*SEMI-AUTOMATIC, TURBO, 3-SHOT SAFETY BURST,  
AUTO RESPONSE, FULL-SAFETY AUTO*

- FOR RAPID FIRING UP TO 20 BALLS PER SECOND
- REQUIRES 9 VOLT BATTERY (NOT INCLUDED)

### MODEL 02-EG

Individual Clamshell - 6.25" x 6.25" x 1.25"  
Individual Clamshell Weight - 0.66 lbs.  
Master Carton (6-Pack) - 6.5" x 6.5" x 7.75"  
Weight - 4.75 lbs. Cube - 0.19  
UPC - 6-69966-99-6453



## RESPONSE® TRIGGER KIT

- PATENTED FOR RAPID AIR-ASSISTED FIRING  
UP TO 15 ROUNDS/SECOND

### MODEL RT-03

Individual Clamshell - 6.25" x 6.25" x 1.25"  
Individual Clamshell Weight - 0.34 lbs.  
Master Carton (6-Pack) - 6.5" x 6.5" x 7.75"  
Weight - 3 lbs. Cube - 0.19  
UPC - 6-69966-99-6439



## DOUBLE TRIGGER KIT

- INCREASES TRIGGER SPEED
- ERGONOMIC DESIGN HELPS PREVENT FATIGUE

### MODEL 02-DT

Individual Carton - 4" x 6" x 1"  
Individual Carton Weight - 0.06 lbs.  
Master Carton (6-Pack) - 4.25" x 6.25" x 6.25"  
Weight - 0.9 lbs. Cube - 0.1  
UPC - 6-69966-99-6415



# A-5™

## STOCKS



### M249 SAW AIR-THRU KIT

- *BALANCES PERFECTLY AND ROLLS FIRMLY ONTO TARGET LIKE A TRIED-AND-TRUE SAW STOCK RIFLE*
  - *OVER-MOLDED (INTEGRATED) HIGH-PRESSURE AIR LINE*
  - *RETRACTABLE "FLIP-UP" SUPPORT BRACE & RIDGED BUTTPLATE*
  - *INCLUDES SAW STOCK, A2 STANDARD FOREGRIP, STAINLESS STEEL BRAIDED AIR LINE AND ASA FITTING*
  - *SAW STOCK LENGTH: 11 INCHES*
- MODEL T275015

### DOGLEG AIR-THRU

- *INNOVATIVE DESIGN ALLOWS SHOOTER TO ACHIEVE A SIGHTLINE UNEQUALED BY OTHER PAINTBALL STOCKS*
- *STOCK "DOGLEGS" AROUND THE SHOOTER'S HEAD AND RETURNS TO REST SECURELY ON THE SHOULDER*
- *MADE FROM SOLID MACHINED AND FORMED ALUMINUM*
- *OVER-MOLDED (INTEGRATED) AIR LINE*
- *INCLUDES STAINLESS STEEL BRAIDED AIR LINE AND HIGH PERFORMANCE ASA FITTING*
- *LENGTH: 11 INCHES*
- *BOW OFFSET: 2 INCHES (MEASURED FROM CENTER)*



MODEL T275019



### M249 SAW

- *BALANCES PERFECTLY AND ROLLS FIRMLY ONTO TARGET LIKE A TRIED-AND-TRUE SAW STOCK RIFLE*
  - *MADE FROM THE SAME MATERIAL AS THAT USED IN ACTUAL FIREARMS*
  - *RETRACTABLE "FLIP-UP" SUPPORT BRACE*
  - *RIDGED BUTTPLATE ENSURES A SECURE SHOULDER GRIP*
  - *LENGTH: 11 NCHES*
- MODEL T275016





## COLLAPSIBLE CAR STOCK

- 6 POSITION ADJUSTABLE STOCK MOUNTS TO MARKER BY REPLACING EXISTING END CAP
- HEAVY-DUTY COMPOSITE FRAME
- ADDS UNIQUE LOOK & COMFORT

### MODEL 02-TAC

Individual Clamshell - 6" x 12" x 2.25"  
 Individual Clamshell Weight - 0.92 lbs.  
 Master Carton (4-Pack) - 6.25" x 12.25" x 9.25"  
 Weight - 4.9 lbs. Cube - 0.41  
 UPC - 6-69966-99-6514

## Longbow AIR-THRU

- FEATURES IDEAL ERGONOMICS AND STABLE SHOOTING PLATFORM THAT BALANCES AND PERFORMS LIKE A REAL FIREARM
- LIGHTWEIGHT, COMPACT, AND EXTREMELY DURABLE
- INCLUDES MP FOREGRIP, STAINLESS STEEL BRAIDED AIR LINE AND ASA FITTING
- QUICK DISCONNECT REAR AIR NIPPLE
- BUTTSTOCK LENGTH: 8 INCHES
- HEIGHT: 5 INCHES

MODEL T275020



## Longbow

- FEATURES IDEAL ERGONOMICS AND STABLE SHOOTING PLATFORM THAT BALANCES AND PERFORMS LIKE A REAL FIREARM
- LIGHTWEIGHT, COMPACT AND EXTREMELY DURABLE
- GLASS-FILLED NYLON COMPOSITE CONSTRUCTION
- BUTTSTOCK LENGTH: 8 INCHES
- HEIGHT: 5 INCHES

MODEL T275021



## COMMANDO

- CLASSIC MIL-SIM LOOK, PREMIUM DURABILITY AND VERSATILE FUNCTIONALITY
- TILTED STOCK WITH CARVED-OUT GROOVE ENHANCES SIGHTLINE DOWN THE BARREL WHILE WEARING PAINTBALL GOGGLES
- SUPERIOR ERGONOMIC HANDHOLD
- SIMPLE INSTALLATION & SOLID ATTACHMENT POINT
- LENGTH: 11 INCHES
- HEIGHT (AT BUTTPLATE): 4 INCHES

MODEL T275017



## COMMANDO AIR THRU

- CARVED-OUT GROOVE ENHANCES THE SHOOTER'S SIGHTLINE
- HIGH-PRESSURE STEEL AIR LINE SEALS DIRECTLY TO THE MARKER'S AIR SYSTEM
- INCLUDES A2 FOREGRIP, STAINLESS STEEL BRAIDED AIR LINE AND ASA FITTING
- QUICK-DISCONNECT, ANGLED REMOTE NIPPLE
- SIMPLE INSTALLATION AND SOLID ATTACHMENT POINT
- BUTTSTOCK LENGTH: 11 INCHES
- HEIGHT (AT BUTTPLATE): 4 INCHES

MODEL T275022





# A-5

## FOREGRIPS / SHROUDS

### A2 FOREGRIP FOR MP MAG

- FITS WITH MP5 MAGS
- INSTALLS BY UTILIZING THE EXISTING FRONT GRIP MOUNTING POINT
- DESIGNED TO HOUSE THE STAINLESS STEEL BRAIDED AIR LINE AND ASA FITTING

MODEL T275006



### A2 FOREGRIP

- REPLACES A5 FRONT GRIP
- FITS ON BASIC TIPPMMANN A5
- ADDS UNIQUE LOOK & COMFORT

MODEL T275007

### F.O.G FOREGRIP. W/4 RAILS

- FEATURES FOUR INTEGRATED 6-INCH WEAVER RAILS
- EASILY INSTALLED BY LOCKING INTO THE A-5 FRONT RECEIVER WITH A FIRM TWIST
- CONSTRUCTED FROM STRONG MACHINED ALUMINUM BILLET WITH OVER-MOLDED GLASS-FILLED NYLON COMPOSITE
- WEIGHT: 0.45 POUNDS
- LENGTH: 7 INCHES

MODEL T275010



### XP36 FOREGRIP

- BOLTS DIRECTLY TO THE GUN BODY WITHOUT THE NEED FOR SET SCREWS THAT CAN SCAR OR DAMAGE YOUR BARREL
- LENGTH: OVERALL LENGTH IS 7 INCHES (INCREASES GUN LENGTH BY 3 INCHES)
- OUTER DIAMETER: 2 INCHES AT BASE; 1 INCH AT BARREL HOLE
- INNER DIAMETER: 1 INCH AROUND BARREL
- SUPER-STRONG CONSTRUCTION

MODEL T275009

### XP36 SHROUD

- FREE-FLOATING DESIGN WON'T SCAR OR DAMAGE YOUR BARREL
- OVERALL LENGTH IS 14 INCHES, WITH A TOTAL OF 10 INCHES ADDED TO GUN
- OUTER DIAMETER: 2 INCHES AT BASE; 1 INCH AT BARREL HOLE
- INNER DIAMETER: 1 INCH AROUND BARREL
- GLASS-FILLED NYLON COMPOSITE CONSTRUCTION
- EASY TO INSTALL. BOLTS TO GUN BODY (LONG BOLTS PROVIDED)

MODEL T275008



# MAGAZINES / ACCESSORIES

## MP MAG. TO REMOTE

- EFFICIENT AIR-THRU DESIGN AND IDEALLY POSITIONED NIPPLE ALLOW YOU TO RAPIDLY ATTACH OR DETACH THE QUICK-DISCONNECT END OF YOUR REMOTE LINE.
- BUILT TO WITHSTAND THE DEMANDS OF INTENSE WOODSBALL PLAY
- ANODIZED TOMBSTONE PROVIDES A PERFECT SEAL
- LENGTH: 8.5 INCHES
- WIDTH: 1 INCH

MODEL T275014



## MP MAG. TO BOTTLE

- COOL MIL-SIM LOOKS AND RUGGED CONSTRUCTION
- INCLUDES 90-DEGREE FITTING AND STAINLESS STEEL BRAIDED AIR LINE
- ANODIZED TOMBSTONE PROVIDES A PERFECT SEAL
- LENGTH: 8 INCHES
- WIDTH: 1 INCH

MODEL T275013



## FLAT TOP RAIL

- EXTREMELY LOW PROFILE ALLOWS YOU TO ADAPT NEARLY ANY WEAVER ACCESSORY TO THE TOP OF YOUR A-5
- MADE FROM MACHINED ALUMINUM
- LENGTH: 6 INCHES
- SLIDES OVER A-5 DOVETAIL AND SECURES WITH SET SCREWS

MODEL T275031



## STOVEPIPE HOPPER ADAPTER

- PROVIDES A CLEAR LINE OF SIGHT DOWN YOUR TIPPMANN A-5 BY SLIGHTLY OFFSETTING THE HOPPER
- INCREASES HOPPER CAPACITY BY APPROXIMATELY 18 PAINTBALLS
- ALLOWS SIGHT MOUNTING
- FITS ANY CYCLONE FEED SYSTEM
- HEIGHT: 3 INCHES

MODEL T275034



**TIPPMANN®**





## 200 ROUND HOPPER

- PREMIUM 200 ROUND FEED HOPPER WITH SPRING LOADED FLIP CAP
- ALSO FITS X7

MODEL 02-29  
Package: Bulk



## LP CYCLONE® HOPPER

- LOW PROFILE
- OFFSET DESIGN
- PROVIDES A CLEAN VIEW ALONG TOP OF MARKER
- ALSO FITS A5

MODEL T210007  
Individual Poly Bag  
Mstr. Crt (6pk) 14" x 7" x 4"  
Weight - 0.35 lbs    Cube 0.23

## EXPANSION CHAMBER KIT

- INCLUDES ALL COMPONENTS NECESSARY TO UPGRADE YOUR MARKER
- IMPROVES ACCURACY, COMFORT & CO2 EFFICIENCY
- HELPS ELIMINATE LIQUID CO2 FROM ENTERING MARKER

### MODEL 02-EXP

Package: Clamshell  
UPC: 6-69966-99-0390



## UNIVERSAL MOUNT

- ADAPTER TO ADD DROP FORWARD TO A-5™ MARKER

MODEL LC-12  
Package: Poly bag  
UPC: 6-69966-99-1496



## UNIVERSAL PARTS KIT

- A FULL RANGE OF REPLACEMENT PARTS

- (1) FRONT BOLT O-RING
- (1) REAR BOLT O-RING
- (1) PUSH PIN
- (1) BALL LATCH
- (1) VALVE O-RING (LARGE)
- (1) TRIGGER PLATE PIN
- (1) VALVE SPRING WASHER
- (1) VELOCITY SCREW
- (2) BODY NUTS
- (2) RECEIVER BOLTS (SHORT)
- (1) FEEDER RATCHET
- (1) SEAR ROLL PIN
- (1) MARKER OIL
- (1) DRIVE SPRING

### MODEL T201001

Individual Reusable Container - 3" x 5" x 1.5"  
Individual Reusable Container - 0.2 lbs.  
Mstr. Ctn. (6-Pk) - 9.25" x 5.13" x 3.13"  
Weight - 1.5 lbs.    Cube - 0.116  
UPC - 6-69966-99-4510

- ACTUAL CONTENTS MAY CHANGE

## DELUXE PARTS KIT

- A FULL RANGE OF REPLACEMENT PARTS

- (1) FRONT BOLT
- (1) FEEDER BOLT
- (1) BANJO FITTING
- (1) 1/16 HOSE 1"
- (1) TRIGGER SPRING
- (1) FRONT BOLT O-RING
- (1) VALVE WASHER
- (5) TRIGGER PLATE PINS
- (1) A-5™ BARREL O-RING
- (2) RECEIVER PINS
- (1) LINKAGE ARM
- (1) DRIVE SPRING
- (6) GRIP NUTS
- (1) FRONT GRIP NUT
- (1) VELOCITY SCREW
- (1) SAFETY O-RING (RED)
- (2) TRIGGER RETURN SPRINGS
- (1) PISTON U-CUP
- (2) REAR BOLT O-RINGS
- (1) BALL LATCH
- (5) GRIP SCREWS
- (1) VALVE O-RING (LARGE)
- (6) RECEIVER BOLTS (SHORT)
- (1) TANK VALVE O-RING
- (2) RECEIVER PIN SPRINGS
- (1) SEAR PIN
- (1) DRIVE PINS CA
- (1) FRONT GRIP BOLT
- (1) FRONT GRIP WASHER
- (1) A-5™ SAFETY

### MODEL 02-PK

Package: Reusable Container  
UPC: 6-69966-99-4534

- ACTUAL CONTENTS MAY CHANGE

## O-RING KIT

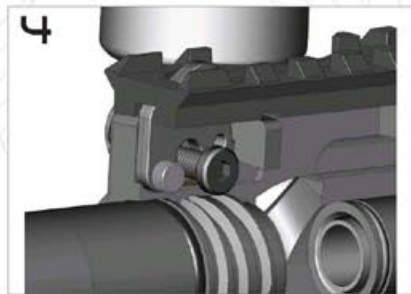
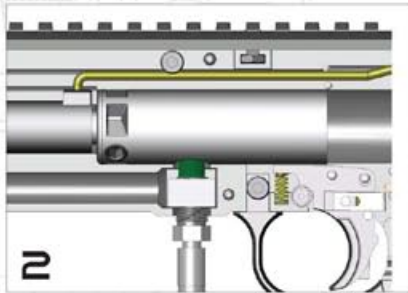
### MODEL T201200

Individual Clamshell - 2.75" x 4" x 1"  
Individual Clamshell Weight - 0.02 lbs.  
Mstr. Ctn. (6-PK) - 3" x 4.25" x 6.75"  
Weight - 1.5 lbs.    Cube - 0.116  
UPC - 6-69966-99-7511

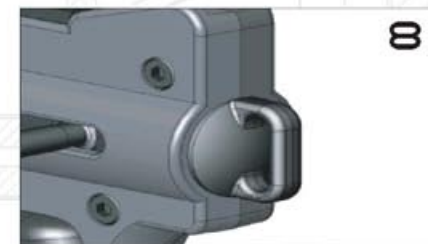
# PLATINUM SERIES

**NEW**  
EASIER TO UPGRADE,  
MODIFY AND MAINTAIN

**98**  
**CUSTOM**



- 1- **SPLIT RECEIVER DESIGN: EASIER ACCESS TO INTERNAL COMPONENTS FOR SERVICE, CLEANING, & INSTALLATION OF ACCESSORIES AND UPGRADES**
- 2- **NEW STYLE POWER TUBE & INVERTED FLARE VALVE MOUNTING**
  - **ALLOWS THE POWER TUBE / VALVE ASSEMBLY TO BE REMOVED WITH JUST THE REAR RECEIVER SECTION OFF**
  - **IMPROVES RELIABILITY AND EFFICIENCY ELIMINATING TWO FASTENERS TO EASE ASSEMBLY AND SERVICE**
  - **DUAL AIR PORT SYSTEM ALLOWS THE USE OF BOTH AN RT KIT AND CYCLONE KIT WITHOUT THE NEED FOR AN ADAPTER KIT**
- 3- **FULL DEPTH POCKETS ELIMINATES THE NEED TO LOOSEN ASA BOLTS FOR DISASSEMBLY FOR EASIER ASSEMBLY AND SERVICE**
- 4- **SECURED FRONT SITE SPRING FOR EASIER SERVICE AND REASSEMBLY**
- 5- **NEW MATTE FINISH ON ASA AND BARREL REDUCES REFLECTIVE GLARE**
- 6- **PICATINNY RAIL PROVIDES A QUICK AND CONVENIENT WAY TO ADD ACCESSORIES**
- 7- **REDESIGNED FRONT VERTICAL GRIP, IMPROVED STABILITY AND ADDED TEXTURE FOR A BETTER FEEL**
- 8- **REDESIGNED SLING MOUNT END CAP: EASY ATTACHMENT OF A VARIETY OF SLING STYLES**



**TIPPMANN®**



# 98 CUSTOM

## PLATINUM SERIES

# NEW

### 98 CUSTOM® A.C.T.

OUT OF THE BOX PERFORMANCE THAT IS NOW MORE RELIABLE, AND EASIER TO UPGRADE AND MAINTAIN.

- SEMI-AUTOMATIC, .68 CALIBER
- 8 ½" QUICK THREAD HIGH PERFORMANCE STONE HONED BARREL
- NEW 3 PIECE ALL ALUMINUM DIE CAST SPLIT RECEIVER
- FULLY CUSTOMIZABLE RECEIVER & ELECTRONICS ADAPTABLE
- HEAVY DUTY STAINLESS STEEL BRAIDED GAS LINE
- WIDE RANGE VELOCITY ADJUSTMENT SCREW
- DURABLE BLACK FINISH
- 150+ EFFECTIVE RANGE; LIGHTWEIGHT TRIGGER PULL

INCLUDES MAINTENANCE PACK:

ALLEN WRENCH SET, SPARE TANK O-RING, MARKER LUBRICANT, CLEANING CABLE, AND BARREL SLEEVE

8 ½" HIGH PERFORMANCE BARREL



### POWER PACK

#### MODEL T102063 – BLACK IN CARTON

Individual Carton - 22.88" x 13.75" x 5"  
Master Carton (5-Pack) - 25" x 14" x 23"  
Weight - 32.0 lbs. Cube - 4.66  
UPC - 6-69966-99-3889

#### MODEL T102064 – BLACK IN CLAMSHELL

Individual Clamshell - 24" x 12.88" x 7.66"  
Master Clamshell (5-Pack) - 24.25" x 13.13" x 38.55"  
Weight - 33.4 lbs. Cube - 7.10  
UPC - 6-69966-99-3872

### BASIC

#### MODEL T102061 – BLACK IN CARTON

Individual Carton - 15.88" x 13.88" x 4.38"  
Master Carton (5-Pack) - 22" x 15" x 17"  
Weight - 27.5 lbs. Cube - 3.25  
UPC - 6-69966-99-3902

#### MODEL T102062 – BLACK IN CLAMSHELL

Individual Clamshell - 21.5" x 12" x 5.5"  
Master Clamshell (5-Pack) - 21.75" x 12.25" x 27.75"  
Weight - 21.6 lbs. Cube - 4.28  
UPC - 6-69966-99-3896

POWER PACK  
FEATURES:

- 200 ROUND HOPPER
- HIGH PERFORMANCE GOGGLE
- 9 OZ. TANK



SPLIT RECEIVER DESIGN PROVIDES EASIER ACCESS TO INTERNAL COMPONENTS FOR SIMPLIFIED INSTALLATION OF ACCESSORIES AND UPGRADES.



### E-TRIGGER

#### MODEL T102068 – BLACK IN CARTON

Individual Carton - 15.88" x 13.88" x 4.38"  
Master Carton (5-Pack) - 22" x 15" x 17"  
Weight - 27.5 lbs. Cube - 3.25  
UPC - 6-69966-99-3827



### RESPONSE

#### MODEL T102067 – BLACK IN CARTON

Individual Carton - 15.88" x 13.88" x 4.38"  
Master Carton (5-Pack) - 22" x 15" x 17"  
Weight - 27.5 lbs. Cube - 3.25  
UPC - 6-69966-99-3834

QUICK RELEASE FEEDER ELBOW

ALL ALUMINUM DIE CAST SPLIT RECEIVER:  
EASIER TO MODIFY, EASIER TO MAINTAIN

PICATINNY RAIL FOR EASIER MODIFICATION

**TIPPMANN**

**98 CUSTOM**

REDESIGNED SLING  
MOUNT END CAP

INVERTED FLARE GAS  
LINE CONNECTION  
FOR EASIER SERVICE  
AND MAINTENANCE

LIGHTWEIGHT TRIGGER PULL



**BUILT IN A.C.T. (ANTI-CHOP TECHNOLOGY)  
ELIMINATES BALL CHOPPING**

**FULLY COMPATIBLE FOR CO2,  
COMPRESSED AIR OR NITROGEN**



**TIPPMANN®**



# 98 CUSTOM

## PLATINUM SERIES DIGI CAMO A.C.T.

# NEW

### DIGI CAMO

#### 98 CUSTOM PLATINUM SERIES (CAMO FINISH)

- SEMI-AUTOMATIC, .68 CALIBER
- 8 1/2" QUICK THREAD HIGH PERFORMANCE STONE HONED BARREL
- NEW 3 PIECE ALL ALUMINUM DIE CAST RECEIVER
- FULLY CUSTOMIZABLE RECEIVER & ELECTRONICS ADAPTABLE
- HEAVY DUTY STAINLESS STEEL BRAIDED GAS LINE
- WIDE RANGE VELOCITY ADJUSTMENT SCREW
- DURABLE CAMO FINISH
- 150+ EFFECTIVE RANGE; LIGHTWEIGHT TRIGGER PULL

#### INCLUDES MAINTENANCE PACK:

ALLEN WRENCH SET, SPARE TANK O-RING, MARKER LUBRICANT, CLEANING CABLE, AND BARREL SLEEVE

#### MODEL T102065 - BASIC DIGI CAMO IN CARTON

Individual Carton - 15.88" x 13.88" x 4.38"

Master Carton (5-Pack) - 22" x 15" x 17"

Weight - 27.5 lbs. Cube - 3.25

UPC - 6-69966-99-3865

8 1/2" HIGH PERFORMANCE BARREL



SPLIT RECEIVER DESIGN PROVIDES EASIER ACCESS TO INTERNAL COMPONENTS FOR SIMPLIFIED INSTALLATION OF ACCESSORIES AND UPGRADES.



200 ROUND HOPPER (INCLUDED)



BUILT IN A.C.T. (ANTI-CHOP TECHNOLOGY)  
ELIMINATES BALL CHOPPING



QUICK RELEASE FEEDER ELBOW

ALL ALUMINUM DIE CAST SPLIT RECEIVER:  
EASIER TO MODIFY, EASIER TO MAINTAIN

PICATINNY RAIL FOR EASIER MODIFICATION

98 CUSTOM

REDESIGNED SLING  
MOUNT END CAP

INVERTED FLARE GAS  
LINE CONNECTION  
FOR EASIER SERVICE  
AND MAINTENANCE

LIGHTWEIGHT TRIGGER PULL

DIGI CAMO – THE MOST POPULAR CAMO STYLE IN USE TODAY!  
IT FEATURES A WEATHERPROOF FINISH THAT IS APPLIED AS A  
POWDER COAT TO RESIST FADING AND SCRATCHES.

FULLY COMPATIBLE FOR CO2,  
COMPRESSED AIR OR NITROGEN

**TIPPMANN®**



# 98 CUSTOM PRO

## PLATINUM SERIES

# NEW

### 98 CUSTOM PRO® A.C.T.

98 CUSTOM PERFORMANCE WITH BUILT IN UPGRADES FOR ADDED SPEED, ACCURACY AND FEEL

- SEMI-AUTOMATIC, .68 CALIBER
- 11" QUICK THREAD HIGH PERFORMANCE STONE HONED BARREL
- DOUBLE TRIGGER SYSTEM
- DROP FORWARD
- NEW 3 PIECE ALL ALUMINUM DIE CAST RECEIVER
- FULLY CUSTOMIZABLE RECEIVER & ELECTRONICS ADAPTABLE
- HEAVY DUTY STAINLESS STEEL BRAIDED GAS LINE
- WIDE RANGE VELOCITY ADJUSTMENT SCREW
- DURABLE BLACK FINISH
- 150+ EFFECTIVE RANGE; LIGHTWEIGHT TRIGGER PULL

INCLUDES MAINTENANCE PACK:

ALLEN WRENCH SET, SPARE TANK O-RING, MARKER LUBRICANT, CLEANING CABLE, AND BARREL SLEEVE

BUILT IN UPGRADES!

- 11" BARREL
- DOUBLE TRIGGER
- DROP FORWARD

#### MODEL T105024 – BASIC BLACK IN CARTON

Individual Carton - 15.88" x 13.88" x 4.38"  
Master Carton (5-Pack) - 22" x 14" x 17"  
Weight - 27.5 lbs. Cube - 3.03  
UPC - 6-69966-99-3810

11" HIGH PERFORMANCE BARREL



SPLIT RECEIVER DESIGN PROVIDES EASIER ACCESS TO INTERNAL COMPONENTS FOR SIMPLIFIED INSTALLATION OF ACCESSORIES AND UPGRADES.

### E-TRIGGER BASIC

#### MODEL T105027 – BLACK IN CARTON

Individual Carton - 15.88" x 13.88" x 4.38"  
Master Carton (5-Pack) - 22" x 14" x 17"  
Weight - 27.5 lbs. Cube - 3.03  
UPC - 6-69966-99-3773



QUICK RELEASE FEEDER ELBOW

ALL ALUMINUM DIE CAST SPLIT RECEIVER:  
EASIER TO MODIFY, EASIER TO MAINTAIN

PICATINNY RAIL FOR EASIER MODIFICATION

**TIPPMANN**

**98 CUSTOM PRO**

REDESIGNED SLING  
MOUNT END CAP

INVERTED FLARE GAS  
LINE CONNECTION  
FOR EASIER SERVICE  
AND MAINTENANCE

ERGONOMIC DOUBLE  
TRIGGER FOR FASTER FIRING

INTEGRATED ALUMINUM DROP  
FORWARD TO REPOSITION THE TANK



**BUILT IN A.C.T. (ANTI-CHOP TECHNOLOGY)  
ELIMINATES BALL CHOPPING**



FULLY COMPATIBLE FOR CO2,  
COMPRESSED AIR OR NITROGEN

**TIPPMANN®**



# 98 CUSTOM PRO

## PLATINUM SERIES

# NEW

### 98 CUSTOM PRO DIGI CAMO

- SEMI-AUTOMATIC, .68 CALIBER
- 11" QUICK THREAD HIGH PERFORMANCE STONE HONED BARREL
- DOUBLE TRIGGER SYSTEM
- DROP FORWARD
- NEW 3 PIECE ALL ALUMINUM DIE CAST RECEIVER
- FULLY CUSTOMIZABLE RECEIVER & ELECTRONICS ADAPTABLE
- HEAVY DUTY STAINLESS STEEL BRAIDED GAS LINE
- WIDE RANGE VELOCITY ADJUSTMENT SCREW
- DURABLE DIGI-CAMO FINISH
- 150+ EFFECTIVE RANGE; LIGHTWEIGHT TRIGGER PULL

#### INCLUDES MAINTENANCE PACK:

ALLEN WRENCH SET, SPARE TANK O-RING, MARKER LUBRICANT, CLEANING CABLE, AND BARREL SLEEVE

#### BUILT IN UPGRADES!

- 11" BARREL
- DOUBLE TRIGGER
- DROP FORWARD

#### MODEL T105025 - DIGI CAMO IN CARTON

Individual Carton - 15.88" x 13.88" x 4.38"  
Master Carton (5-Pack) - 22" x 14" x 17"  
Weight - 27.5 lbs. Cube - 3.03  
UPC - 6-69966-99-3797

#### MODEL T105026 - DIGI CAMO IN CLAM SHELL

Individual Carton - 24" x 12.88" x 4"  
Master Carton (5-Pack) - 24.25" x 13.13" x 20.25"  
Weight - 22.4 lbs. Cube - 3.73  
UPC - 6-69966-99-3780



200 ROUND HOPPER (INCLUDED)

11" HIGH PERFORMANCE BARREL



SPLIT RECEIVER DESIGN PROVIDES EASIER ACCESS TO INTERNAL COMPONENTS FOR SIMPLIFIED INSTALLATION OF ACCESSORIES AND UPGRADES.



BUILT IN A.C.T. (ANTI-CHOP TECHNOLOGY)  
ELIMINATES BALL CHOPPING



**QUICK RELEASE FEEDER ELBOW**

**ALL ALUMINUM DIE CAST SPLIT RECEIVER:  
EASIER TO MODIFY, EASIER TO MAINTAIN**

**PICATINNY RAIL FOR EASIER MODIFICATION**

**REDESIGNED SLING  
MOUNT END CAP**

**INVERTED FLARE GAS  
LINE CONNECTION  
FOR EASIER SERVICE  
AND MAINTENANCE**

**ERGONOMIC DOUBLE  
TRIGGER FOR FASTER FIRING**

**INTEGRATED ALUMINUM DROP  
FORWARD TO REPOSITION THE TANK**

**DIGI CAMO – THE MOST POPULAR CAMO STYLE IN USE TODAY!  
IT FEATURES A WEATHERPROOF FINISH THAT IS APPLIED AS A  
POWDER COAT TO RESIST FADING AND SCRATCHES.**

**FULLY COMPATIBLE FOR CO2,  
COMPRESSED AIR OR NITROGEN**

**TIPPMANN®**



# 98 CUSTOM

## PLATINUM SERIES TACTICAL EDITION

# NEW

### AK TACTICAL W/ACT

98 CUSTOM PERFORMANCE WITH BUILT IN UPGRADES FOR  
(ADDED SPEED, ACCURACY AND FEEL)

- SEMI-AUTOMATIC, .68 CALIBER
- 8 1/2" QUICK THREAD HIGH PERFORMANCE STONE HONED BARREL
- NEW 3 PIECE ALL ALUMINUM DIE CAST RECEIVER
- FULLY CUSTOMIZABLE RECEIVER & ELECTRONICS ADAPTABLE
- HEAVY DUTY STAINLESS STEEL BRAIDED GAS LINE
- WIDE RANGE VELOCITY ADJUSTMENT SCREW
- DURABLE BLACK FINISH
- 150+ EFFECTIVE RANGE; LIGHTWEIGHT TRIGGER PULL



INCLUDES MAINTENANCE PACK:

ALLEN WRENCH SET, SPARE TANK O-RING, MARKER  
LUBRICANT, CLEANING CABLE, AND BARREL SLEEVE

BUILT IN UPGRADES!

- TACTICAL STOCK
- AK47 STYLE FOREGRIP
- AK47 STYLE MAGAZINE

MODEL T102074 - BLACK IN CARTON

Individual Carton - 22.5" x 16" x 4.75"  
Individual Carton Weight - 5 LBS  
Master Carton (5-Pack) - 23" x 16.25" x 24"  
Weight 25 lbs. Cube 5.2  
UPC - 6-69966-99-4114



BUILT IN A.C.T. (ANTI-CHOP TECHNOLOGY)  
ELIMINATES BALL CHOPPING



### AK TACTICAL NON/ACT

MODEL T102075 - BLACK IN CARTON

Individual Carton - 22.5" x 16" x 4.75"  
Individual Carton Weight - 5 LBS  
Master Carton (5-Pack) - 23" x 16.25" x 24"  
Weight 25 lbs. Cube 5.2  
UPC - 6-69966-99-4121



SPLIT RECEIVER DESIGN PROVIDES EASIER ACCESS TO  
INTERNAL COMPONENTS FOR SIMPLIFIED INSTALLATION  
OF ACCESSORIES AND UPGRADES.



# PLATINUM SERIES ULTRA BASIC

# NEW

ALL ALUMINUM DIE CAST SPLIT RECEIVER:  
EASIER TO MODIFY, EASIER TO MAINTAIN

QUICK RELEASE FEEDER ELBOW

PICATINNY RAIL FOR EASIER MODIFICATION

8 1/2" HIGH PERFORMANCE BARREL

REDESIGNED SLING  
MOUNT END CAP

## ULTRA BASIC

### 98 CUSTOM ULTRA BASIC PLATINUM SERIES

- SEMI-AUTOMATIC, .68 CALIBER NON A.C.T.
- 8 1/2" QUICK THREAD HIGH PERFORMANCE STONE HONED BARREL
- NEW 3 PIECE ALL ALUMINUM DIE CAST RECEIVER
- FULLY CUSTOMIZABLE RECEIVER & ELECTRONICS ADAPTABLE
- HEAVY DUTY STAINLESS STEEL BRAIDED GAS LINE
- WIDE RANGE VELOCITY ADJUSTMENT SCREW
- DURABLE BLACK FINISH
- 150+ EFFECTIVE RANGE; LIGHTWEIGHT TRIGGER PULL

### INCLUDES MAINTENANCE PACK:

ALLEN WRENCH SET, SPARE TANK O-RING, MARKER LUBRICANT,  
CLEANING CABLE, AND BARREL SLEEVE

### MODEL T102072 – BLACK IN CARTON

Individual Carton - 14.06" x 11" x 4.5"  
Master Carton (5-Pack) - 15" x 11.5" x 22.75"  
Weight - 22.8 lbs. Cube - 4.10  
UPC - 6-69966-99-4015



SPLIT RECEIVER DESIGN PROVIDES EASIER ACCESS TO  
INTERNAL COMPONENTS FOR SIMPLIFIED INSTALLATION  
OF ACCESSORIES AND UPGRADES.

LIGHTWEIGHT  
TRIGGER PULL

INVERTED FLARE GAS  
LINE CONNECTION  
FOR EASIER SERVICE  
AND MAINTENANCE

FULLY COMPATIBLE FOR CO2,  
COMPRESSED AIR OR NITROGEN

**TIPPMANN®**



# TIPPMANN RENTAL

## FIELD RENTAL KIT

**INCREASE YOUR PAINT SALES!! LESS DOWN TIME, MORE SHOTS PER PLAYER.**

- SEMI-AUTOMATIC, .68 CALIBER
- NEW EXTRA DURABLE CLEAR COAT FINISH
- PERMANENT LASER ETCHED RENTAL MARKINGS
- 8 ½" STONE HONED BARREL
- NEW 3 PIECE ALL ALUMINUM DIE CAST RECEIVER
- FULLY UPGRADEABLE WITH 98 CUSTOM ACCESSORIES
- TIPPMANN QUALITY AND SERVICE

### VFORCE® VANTAGE™ FIELD GOGGLE

- ANTI FOG LENS
- EASY TO MAINTAIN FOAMLESS RUBBER GASKET DESIGN
- QUICK CHANGE LENS FOR EASY CLEANING

### STRAIGHT SHOT® SQUEEGEE

- SPRING-LOADED RUBBER DISC TO CLEAR BROKEN PAINT
- CLOTH END TO CLEAN THE BARREL AND CHAMBER
- FLEXIBLE CONSTRUCTION

### 200 ROUND HOPPER

20 OZ. TANK WITH SAFE LINK VALVE  
TIPPMANN BARREL SLEEVE

### FIELD RENTAL KIT

MODEL T102071 – 10 PACK (CLEAR COAT A.C.T.)

Individual Carton - 21" x 20" x 9"

Master Carton (3-Pack) - 21" x 20" x 27" (3 Boxes)

Weight - 32.1 lbs. Cube - 6.56

### MARKER ONLY

MODEL T102070 – 10 PACK (CLEAR COAT A.C.T.)

MODEL T102069 – 10 PACK (CLEAR COAT NON A.C.T.)

INCLUDES MARKER HOPPER AND MAINTENANCE KIT

Individual Carton - 21" x 20" x 9"

Master Carton (2-Pack) - 21" x 20" x 18"

Weight - 29.0 lbs. Cube - 4.37

## EXTRA TOUGH CLEAR COAT FINISH

SECURE FRONT  
SITE SPRING

8 ½" HIGH PERFORMANCE BARREL



SPLIT RECEIVER DESIGN PROVIDES EASIER ACCESS TO INTERNAL COMPONENTS FOR SIMPLIFIED INSTALLATION OF ACCESSORIES AND UPGRADES.



QUICK RELEASE FEEDER ELBOW

**NEW**

FIXED REAR SITE

3 PIECE ALL ALUMINUM DIE CAST RECEIVER:  
EASIER TO MODIFY, EASIER TO MAINTAIN

**TIPPMANN**

**98 RENTAL**

PUSH SAFE

LIGHTWEIGHT TRIGGER PULL

FULL DEPTH  
POCKETS FOR ASA

INVERTED FLARE GAS LINE CONNECTION  
FOR EASIER SERVICE AND MAINTENANCE

FULLY COMPATIBLE FOR CO2, COMPRESSED AIR OR NITROGEN

**TIPPMANN®**



# 98 CUSTOM

## BARRELS

# NEW

### FLATLINE® PLATINUM SERIES

#### NOW EASIER TO INSTALL:

- *SIMPLY THREAD BARREL INTO RECEIVER*
- *PATENTED TECHNOLOGY CREATES BACKSPIN FOR LEVEL & ACCURATE SHOTS*
- *DESIGNED FOR RANGE & ACCURACY*
- *FARTHEST SHOOTING BARREL ON THE MARKET, SHOTS UP TO 250FT.*
- *INCLUDES PICATINNY RAIL ACCESSORY FOR NON PLATINUM SERIES 98's*

#### MODEL T202017

Individual Carton - 5" x 25" x 3.25"  
Master Carton (6-Pack) - 5.25" x 24.25" x 19.75"  
Weight - 9.0 lbs. Cube - 1.46  
UPC - 6-69966-99-3742



### 98 FLATLINE PICATINNY ACCESSORY RAILS

- *LOW PROFILE ALLOWS YOU TO ADAPT NEARLY ANY WEAVER ACCESSORY TO THE SIDES OF YOUR 98 FLATLINE BARREL*
- *CONSTRUCTED FROM HIGH IMPACT COMPOSITE MATERIAL*
- *TWO PER PACK*

#### MODEL T202025



### SNIPER BARRELS

#### SUPERIOR PERFORMANCE!

- *MICRO-HONED & POLISHED INSIDE FOR PRECISION & ACCURACY*
- *IMPROVED ACCURACY OVER STANDARD BARREL*
- *TOUGH ANODIZED FINISH*
- *LIGHTWEIGHT, DURABLE ALUMINUM CONSTRUCTION*

#### MODEL

14" - T202012 UPC - 6-69966-99-4657  
16" - T202013 UPC - 6-69966-99-4664

Individual Tube - 4.75" x 16" x 1.125"  
Individual Tube Weight - 6.57 lbs.  
Master Carton (3-Pack) - 5" x 16.25" x 7"  
Weight - 21.2 lbs. Cube - 3.15



# TRIGGERS

## E-TRIGGER™ ELECTRONIC UPGRADE

- **5 FIRING MODES!**

*SEMI-AUTOMATIC, TURBO, 3-SHOT SAFETY BURST,  
AUTO RESPONSE, FULL SAFETY AUTO*

- **FOR RAPID FIRING UP TO 20 BALLS PER SECOND**
- **REQUIRES 9 VOLT BATTERY (NOT INCLUDED)**
- **WORKS WITH 98 CUSTOM® MARKERS  
WITH SERIAL #893000 OR HIGHER**

### MODEL T205002

Individual Clamshell - 6.25" x 6.25" x 1.25"  
Individual Clamshell Weight - 0.66 lbs.  
Master Carton (6-Pack) - 6.5" x 6.5" x 7.75"  
Weight - 4.75 lbs. Cube - 0.19  
UPC - 6-69966-99-6446



## RESPONSE® TRIGGER KIT

- **PATENTED FOR RAPID AIR-ASSISTED  
FIRING AT 15 ROUNDS/SECOND**
- **KIT INCLUDES PISTON, CONTROL  
VALVE AND POWER TUBE**

### MODEL RT-02

Individual Clamshell - 6.25" x 6.25" x 1.25"  
Individual Clamshell Weight - 0.34 lbs.  
Master Carton (6-Pack) - 6.5" x 6.5" x 7.75"  
Weight - 3 lbs. Cube - 0.19  
UPC - 6-69966-99-6422



## DOUBLE TRIGGER KIT

- **INCREASES TRIGGER SPEED**
- **ERGONOMIC DESIGN HELPS PREVENT FATIGUE**

### MODEL 98C-DT

Individual Carton - 4" x 6" x 1"  
Individual Carton Weight - 0.06 lbs.  
Master Carton (6-Pack) - 4.25" x 6.25" x 6.25"  
Weight - 0.9 lbs. Cube - 0.1  
UPC - 6-69966-99-6408





### COLLAPSIBLE STOCK KIT

- **6 POSITION ADJUSTABLE STOCK MOUNTS TO MARKER BY REPLACING EXISTING END CAP**
- **HEAVY-DUTY COMPOSITE FRAME**
- **ADDS UNIQUE LOOK & COMFORT**

#### MODEL 98-TAC

Individual Clamshell - 6" x 12" x 2.25"  
Individual Clamshell Weight - 0.93 lbs.  
Master Carton (4-Pack) - 6.25" x 12.25" x 9.25"  
Weight - 4.9 lbs. Cube - 0.41  
UPC - 6-69966-99-6507



### DOGLEG AIR-THRU

- **INNOVATIVE STOCK "DOGLEGS" AROUND THE SHOOTER'S HEAD AND RETURNS TO REST SECURELY ON THE SHOULDER, ALLOWING SHOOTER TO ACHIEVE A SIGHTLINE UNEQUALED BY OTHER PAINTBALL GUN STOCKS.**
- **OVER-MOLDED (INTEGRATED) AIR LINE**
- **INCLUDES STAINLESS STEEL BRAIDED AIR LINE AND HIGH PERFORMANCE ASA FITTING**
- **LENGTH: 11 INCHES**
- **HEIGHT: 6 INCHES**
- **BOW OFFSET: 2 INCHES (MEASURED FROM CENTER)**

#### MODEL T275030



### COMMANDO AIR-THRU

- **CARVED-OUT GROOVE ENHANCES THE SHOOTER'S SIGHTLINE**
- **HIGH-PRESSURE STEEL AIR LINE SEALS DIRECTLY TO THE 98 CUSTOM'S AIR SYSTEM**
- **INCLUDES A2 FOREGRIP, STAINLESS STEEL BRAIDED AIR LINE AND ASA FITTING**
- **QUICK-DISCONNECT, ANGLED REMOTE NIPPLE**
- **SIMPLE INSTALLATION AND SOLID ATTACHMENT POINT**
- **BUTTSTOCK LENGTH: 11 INCHES**
- **HEIGHT (AT BUTTPLATE): 4 INCHES**

#### MODEL T275024



### COMMANDO

- **CLASSIC MIL-SIM LOOKS, PREMIUM DURABILITY AND VERSATILE FUNCTIONALITY**
- **TILTED STOCK WITH CARVED-OUT GROOVE ENHANCES SIGHTLINE DOWN THE BARREL OF THE 98 WHILE WEARING PAINTBALL GOGGLES**
- **SUPERIOR ERGONOMIC HANDHOLD**
- **SIMPLE INSTALLATION & SOLID ATTACHMENT POINT**
- **LENGTH: 11 INCHES**
- **HEIGHT (AT BUTTPLATE): 4 INCHES**

#### MODEL T275023



## M249 SAW AIR-THRU

- *BALANCES PERFECTLY AND ROLLS FIRMLY ONTO TARGET LIKE A TRIED-AND-TRUE SAW STOCK RIFLE*
- *OVER-MOLDED (INTEGRATED) HIGH-PRESSURE AIR LINE*
- *RETRACTABLE "FLIP-UP" SUPPORT BRACE & RIDGED BUTTPLATE*
- *INCLUDES SAW STOCK, A2 STANDARD FOREGRIP, STAINLESS STEEL BRAIDED AIR LINE AND ASA FITTING*
- *SAW STOCK LENGTH: 11 INCHES*
- *SAW STOCK HEIGHT (AT BUTTPLATE): 5 INCHES*

MODEL T275026



## M249 SAW

- *BALANCES PERFECTLY AND ROLLS FIRMLY ONTO TARGET LIKE A TRIED-AND-TRUE SAW STOCK RIFLE*
- *MADE FROM THE SAME MATERIAL AS THAT USED IN ACTUAL FIREARMS*
- *RETRACTABLE "FLIP-UP" SUPPORT BRACE*
- *RIDGED BUTTPLATE ENSURES A SECURE SHOULDER GRIP*
- *SAW STOCK LENGTH: 11 INCHES*

MODEL T275025



## Longbow AIR-THRU

- *FEATURES IDEAL ERGONOMICS AND STABLE SHOOTING PLATFORM THAT BALANCES AND PERFORMS LIKE A REAL FIREARM*
- *EFFICIENT AIR-THRU FUNCTIONALITY*
- *LIGHTWEIGHT, COMPACT, AND EXTREMELY DURABLE*
- *INCLUDES A2 FOREGRIP, STAINLESS STEEL BRAIDED AIR LINE AND ASA FITTING*
- *QUICK-DISCONNECT REAR AIR NIPPLE*
- *BUTTSTOCK LENGTH: 8 INCHES*
- *HEIGHT: 5 INCHES*

MODEL T275028



## Longbow

- *FEATURES IDEAL ERGONOMICS AND STABLE SHOOTING PLATFORM THAT BALANCES AND PERFORMS LIKE A REAL FIREARM*
- *LIGHTWEIGHT, COMPACT AND EXTREMELY DURABLE*
- *GLASS-FILLED NYLON COMPOSITE CONSTRUCTION*
- *BUTTSTOCK LENGTH: 8 INCHES*
- *HEIGHT: 5 INCHES*

MODEL T275027





# 98 CUSTOM

## CYCLONE® FEED TACTICAL AK CONVERSION KIT

### CYCLONE® FEED SYSTEM

- AIR-ASSISTED FEEDING UP TO 15 BALLS/SECOND
- FEED SYSTEM POWERED BY MARKER CO2 OR COMPRESSED AIR
- SYNCHRONIZED BALL FEED FOR REDUCED BREAKAGE & JAMMING
- INCLUDES 200 ROUND WIDE-MOUTH HOPPER WITH SNAP CLOSE LID
- NO BATTERIES REQUIRED

#### MODEL T205030

Individual Clamshell - 9.95" x 9.25" x 3.5"  
Master Carton (4-Pack) - 15" x 10.13" x 9.44"  
Weight - 3.1 lbs. Cube - 0.83  
UPC - 6-69966-99-4572

- CYCLONE® RT ADAPTER FOR NON 98 PLATINUM WHEN RUNNING BOTH CYCLONE AND RT KIT

#### MODEL T299003



### 3 PC TACTICAL CONVERSION KIT (AK STYLE)

TRANSFORM A 98 CUSTOM INTO A TACTICAL STYLE MARKER WITH JUST THREE EASY TO INSTALL MODIFICATIONS

- AK STYLE FRONT SHROUD
- AK STYLE MAGAZINE WITH GRIP PLUG
- TACTICAL STOCK

#### MODEL T202010

Individual Carton - 14.25" x 4.75" x 13"  
Master Carton (6-Pack) - 14" x 13.5" x 26.5"  
Weight - 13.05 lbs. Cube - 2.90  
UPC - 6-69966-99-3513



# NEW

# 98 CUSTOM

## MODIFICATIONS / UPGRADES

### DROP FORWARD

- MOVES TANK ATTACHMENT FORWARD TO SHORTEN LENGTH OF MARKER SET-UP
- DURABLE & VERSATILE
- EASY INSTALLATION

#### MODEL T202018

Individual Carton - 6.25" x 6.25" x 1.25"  
Individual Carton Weight - 0.66 lbs.  
Master Carton (6-Pack) - 6.5" x 6.5" x 7.75"  
Weight - 4.75 lbs. Cube - 0.19  
UPC - 6-69966-99-7016



### DELUXE PARTS KIT

- A FULL RANGE OF REPLACEMENT PARTS

- |                             |                               |
|-----------------------------|-------------------------------|
| (1) FRONT BOLT              | (1) VELOCITY SCREW            |
| (1) AMMO BOX WASHER         | (1) TRIGGER RETURN SLIDE      |
| (1) TANK VALVE O-RING       | (1) GRIP NUT                  |
| (6) RECEIVER BOLTS (SH) 98  | (1) BOLT HANDLE               |
| (1) FRONT SIGHT PIN         | (1) FRONT SIGHT SPRING        |
| (1) LINKAGE ARM             | (1) RETURN SLIDE DOWEL PIN    |
| (6) RECEIVER DOWEL PINS     | (1) BARREL O-RING             |
| (2) TANK ADAPTER NUTS       | (1) DRIVE SPRING              |
| (1) DRIVE PIN               | (1) BALL LATCH                |
| (1) AMMO BOX SCREW          | (1) AMMO BOX SCREW NUT        |
| (2) TRIGGER SEAR SPRINGS    | (1) REAR BOLT O-RING          |
| (2) VALVE LOCK SCREWS       | (1) BUFFER O-RING (GRAY)      |
| (1) TANK ADAPTER SCREW (SH) | (1) SAFETY                    |
| (1) SAFETY O-RING           | (1) SAFETY O-RING 98 (RED)    |
| (1) REAR SIGHT ASSEMBLY     | (1) TANK ADAPTER SCREW (LONG) |
| (1) FRONT BOLT O-RING       | (1) SEAR PIN (BLACK)          |
| (1) RECEIVER BOLT (LONG)    |                               |

#### MODEL 98-PK

Package: Reusable Container  
UPC: 6-69966-99-4527

### O-RING KIT

#### MODEL T202200

Individual Clamshell - 2.75" x 4" x 1"  
Individual Clamshell Weight - 0.02 lbs.  
Mstr. Ctn. (6-Pk) - 3" x 4.25" x 6.75"  
Weight - 1.5 lbs. Cube - 0.116  
UPC - 6-69966-99-7528

### UNIVERSAL PARTS KIT

- A FULL RANGE OF REPLACEMENT PARTS

- |                                       |
|---------------------------------------|
| (1) FRONT BOLT O-RING                 |
| (2) VALVE LOCK SCREWS                 |
| (1) REAR BOLT O-RING                  |
| (1) FRONT SIGHT SPRING RECEIVER DOWEL |
| (1) BUFFER O-RING                     |
| (1) DRIVE SPRING                      |
| (1) BALL LATCH                        |
| (1) VELOCITY SCREW                    |
| (1) ADAPTER NUT (10-32)               |
| (2) RECEIVER BOLTS (SHORT)            |
| (1) RECEIVER BOLT (LONG)              |
| (1) FEED ELBOW DOWEL PIN              |
| (2) GRIP NUTS                         |
| (1) FRONT SIGHT PIN                   |
| (1) DOWEL PIN (BLACK)                 |
| (1) MARKER OIL                        |
| (1) PIN                               |

#### MODEL T202001

Individual Reusable Container - 3" x 5" x 1.5"  
Individual Reusable Container Weight - 0.2 lbs.  
Mstr. Ctn. (6-Pk) - 9.25" x 5.13" x 3.13"  
Weight - 1.5 lbs. Cube - 0.116  
UPC - 6-69966-99-4503

### VERTICAL AND EXPANSION CHAMBER KIT -FOR NON PLATINUM SERIES

- IMPROVES ACCURACY, COMFORT & CO2 EFFICIENCY
- INCLUDES ALL COMPONENTS NECESSARY TO UPGRADE YOUR MARKER
- HELPS ELIMINATE LIQUID CO2 FROM ENTERING MARKER

#### MODEL 98C-VE

Package: Clamshell  
Master Carton - 8" x 6.75" x 3"  
UPC - 6-69966-99-0192



### VERTICAL EXPANSION CHAMBER KIT -FOR PLATINUM SERIES

- INSTALLS EASILY AT THE GAS LINE CONNECTION
- IMPROVES ACCURACY, COMFORT & CO2 EFFICIENCY
- INCLUDES ALL COMPONENTS NECESSARY TO UPGRADE YOUR MARKER
- HELPS ELIMINATE LIQUID CO2 FROM ENTERING MARKER

#### MODEL T202016

Package: Clamshell  
UPC 6-69966-99-3766



**TIPPMANN®**



# ACCESSORIES

## BIG BOY GRENADE

- 10 OZ. OF PAINT FOR LARGER SPRAY PATTERN
- RELIABLE: HIGHEST DETONATION RATE
- OPTIMAL SIZE AND SHAPE
- EASY NO PIN TO PULL -ACTIVATES ON CONTACT

MODEL T404051 PINK  
UPC - 6-69966-99-5678

MODEL T404052 BLUE  
UPC - 6-69966-99-5685

MODEL T404053 GREEN  
UPC - 6-69966-99-5692

(5 Pack - Minimum Order)  
Master Carton (5-Pack) - 15" x 6.75" x 2.75"  
Weight - 4.4 lbs. Cube - 1.16



# NEW

## BOOBY BOMB GRENADE TRAP

- EASY TO DEPLOY
- CONVENIENT: ONE FITS IN A STANDARD SIZE POD
- CREATE THE ELEMENT OF SURPRISE

MODEL T404051 GREEN

(3 Pack - Minimum Order)  
Master Carton 8" x 3.25" x 5.75"  
UPC 6-69966-99-5661



# NEW

## POD ROCKET GRENADE

- CONVENIENT: THREE FIT INTO A STANDARD SIZE POD
- RELIABLE: HIGH DETONATION RATE
- EASY: SIMPLY REMOVE THE CLIP AND THROW
- LARGE MARKING RADIUS

MODEL T404004 GREEN

(Sold 3-3 Packs To a Master-Minimum Order)  
Master Carton (3-3Packs) 8" x 3.25" x 5.75"  
UPC 6-69966-99-5654



# NEW

## TIPPMANN GOGGLE

- THERMO-CURED ANTI-FOG LENS
- SUPERIOR DISTORTION-FREE VISION
- QUICK CHANGE LENS SYSTEM
- ERGONOMIC FRAME ELIMINATES PRESSURE POINTS
- INCLUDES VISOR

MODEL T299008

Individual Clamshell - 9.5" x 11.25" x 5.5"  
Individual Clamshell Weight - 0.92 lbs.  
Master Carton (4-Pack) - 11.75" x 10" x 21.5"  
Weight - 6 lbs. Cube - 1.25  
UPC - 6-69966-99-0277



## STRAIGHT SHOT® SQUEEGEE

- SPRING LOADED DESIGN GOES PAST BALL BREAKAGE AREA AND PULLS OUT BROKEN MATERIAL
- RUBBER DISK FORMS TO THE DIAMETER OF THE BARREL TO EFFICIENTLY REMOVE ANY BALL DEBRIS
- CLOTH BOW TIE HELPS DRY THE BARREL OF WET MATERIALS OR CONDENSATION BUILD UP
- COMBO SQUEEGEE DESIGN CAN ALSO PUSH DEBRIS FROM THE BACK END OF THE MARKER OR BARREL

14"  
BLACK

BULK  
MODEL T299203  
UPC - 6-69966-99-2035  
Master Carton (6-Pack) - 21" x 5" x 3"  
Weight - .98 lbs. Cube - 0.19

16"  
BLACK

BULK  
MODEL T299204  
UPC - 6-69966-99-2080  
Master Carton (6-Pack) - 23" x 5" x 3"  
Weight - .98 lbs. Cube - 0.20

14"  
BLACK

PACKAGED  
MODEL T299224  
Individual Tube  
UPC - 6-69966-99-1489  
Master Carton (6-Pack) - 21" x 5" x 3"  
Weight - .98 lbs. Cube - 0.19



## SQUADBUSTER® GRENADE SWIRLING FURY OF PAINT!

MODEL 15-G

Individual Clamshell - 5" x 8" x 2.25"  
Master Carton (6-Pack) - 5.25" x 8.25" x 13.75"  
Weight - 5.2 lbs. Cube - 0.34  
UPC - 6-69966-99-0185



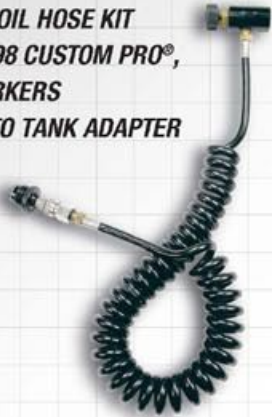


## REMOTE LINE

- 3000PSI REMOTE COIL HOSE KIT
- FITS 98 CUSTOM®, 98 CUSTOM PRO®, A-5™, AND X7 MARKERS
- EASILY ATTACHES TO TANK ADAPTER

### MODEL H-01

Package: Bulk  
UPC - 6-69966-99-0383



## CO2 TANKS

- REFILLABLE
- MEETS OR EXCEEDS ASTM STANDARDS

### 9 oz. TANK MODEL 15-PAC

Package: Bulk  
UPC - 6-69966-99-5555

### 12 oz. TANK MODEL 12T-R

Package: Bulk  
UPC - 6-69966-99-5562

### 20 oz. TANK MODEL 20T-R

Package: Bulk  
UPC - 6-69966-99-5579



## DELUXE CO2 FILL STATION

- CONNECTS TO ANY ASA THREADED CO2 TANK
  - USES STANDARD CGA 320 FITTINGS
  - ON/OFF T-HANDLE, VENT TO DE-GAS THE HOSE
- INCLUDES (1) REBUILD KIT (REQUIRES SCALE, SOLD SEPARATELY)**

### MODEL H-DF

Package: Bulk  
UPC - 6-69966-99-1069



## BARREL SLEEVE

- THE SAFEST WAY TO STOP MISFIRED SHOTS

### MODEL 98-72

Individual Poly bag - 4.5" x 7.5" x .25"  
Master Carton (6-Pack) - 4.75" x 7.75" x 1.5"  
Weight - 1 lbs. Cube - 0.03  
UPC - 6-69966-99-4855

### MODEL TA99001

Package: Bulk

- WIDE MOUTH SLEEVE  
not shown

- WORKS WITH ALL TIPPMMANN FLATLINE™ BARRELS AND MILITARY SHROUDS

### MODEL TA99008

Package: Bulk



## 200 ROUND HOPPER

- FITS MOST REGULAR FEED MARKERS
- PREMIUM 200 ROUND FEED HOPPER WITH SPRING LOADED FLIP CAP

### MODEL VL

Package: Bulk  
UPC - 6-69966-99-0369



## HAND CHRONOGRAPH

### MODEL T299004

Package: Bulk  
UPC - 6-69966-99-1045



## DELUXE MARKER CASE

- EXPANDABLE CASE TO STORE YOUR PAINTBALL GEAR & OVERSIZED EQUIPMENT
- EASILY CUSTOMIZE YOUR MARKER STORAGE CONFIGURATION
- REINFORCED HANDLES & ADJUSTABLE CARRYING STRAP
- PADDED, HEAVY DUTY NYLON CONSTRUCTION
- MULTIPLE POCKETS FOR CONVENIENT STORAGE
- 24 1/4" X 12 1/2" X 6"

### MODEL T301002

Individual Carton - 16.5" x 12" x 5"  
Master Carton (4-Pack) - 16.75" x 12.25" x 20.25"  
Weight - 19.16 lbs. Cube - 2.40  
UPC - 6-69966-99-4961



## VERTICAL REGULATOR

- WORKS WITH ALL TIPPMMANN LOW PRESSURE KITS

### MODEL H-VR

Package: Bulk

## DIGITAL CO2 TANK SCALE

### MODEL T299005

Package: Bulk  
UPC - 6-69966-99-1052



**TIPPMMANN®**



# CAMO CLOTHING



## FUSION BATTLE PANTS

- *DESIGNED FOR COMFORT AND MOBILITY*
- *REINFORCED PADDED KNEES*
- *STRETCH PANELS IN LEG AND CROTCH ENHANCE MOBILITY*
- *SQUEEGEE POCKETS ON BOTH LEGS*
- *CARGO POCKETS WITH INTEGRATED INTERNAL SWAB POCKET*
- *ATHLETIC MATERIAL INSEAM FOR SUPERIOR BREATHABILITY*

MODEL SIZE  
T375009 MEDIUM  
T375010 LARGE  
T375011 X LARGE  
T375012 XX LARGE



## ULTRALITE PANTS

- *DESIGNED FOR COMFORT AND MOBILITY IN HOT CLIMATES*
- *LIGHTWEIGHT, FOOTBALL MESH CONSTRUCTION*
- *REINFORCED PADDED KNEES*
- *SQUEEGEE POCKETS ON BOTH LEGS*
- *CARGO POCKETS WITH INTEGRATED INTERNAL SWAB POCKET*
- *ATHLETIC MATERIAL INSEAM FOR SUPERIOR BREATHABILITY*

MODEL SIZE  
T375023 MEDIUM  
T375024 LARGE  
T375025 X LARGE  
T375026 XX LARGE



## FUSION BATTLE JERSEY

- *EFFECTIVE TACTICAL DIGI-CAMO PATTERN*
- *HIGH NECKLINE TO PROTECT AGAINST NECK SHOTS*
- *ERGONOMIC ELBOW PADDING FOR ROLLING, DIVING, AND SHOOTING FROM THE PRONE POSITION*
- *SUPER COOL FOOTBALL MESH UNDERARM*
- *SHOULDER PADDING FOR INCREASED COMFORT WITH TACTICAL VESTS*

MODEL SIZE  
T375002 MEDIUM  
T375003 LARGE  
T375004 X LARGE  
T375005 XX LARGE



## ULTRALITE JERSEY

- *HIGH NECKLINE TO PROTECT AGAINST NECK SHOTS*
- *REINFORCED ELBOW PADDING FOR ROLLING, DIVING, AND SHOOTING FROM THE PRONE POSITION*
- *BREATHABLE, LIGHTWEIGHT, COMFORTABLE FOOTBALL MESH*

MODEL SIZE  
T375016 MEDIUM  
T375017 LARGE  
T375018 X LARGE  
T375019 XX LARGE



# CAMO VESTS / SLINGS

## BROADSWORD

- BREATHABLE, LIGHTWEIGHT NYLON-WEBBED MESH BASE
- 6+2 140-ROUND POD CONFIGURATION (Q-POD COMPATIBLE)
- ADJUSTABLE SHOULDERS AND SIDE STRAPS
- INTERNAL HARNESS SYSTEM PREVENTS YOUR LOAD FROM "SLOSHING" AS YOU RUN
- MESH HYDRATION BLADDER POUCH
- TWO LARGE GRENADE POCKETS, TANK POUCH, TWO UTILITY POCKETS, RADIO POUCH, PULL-DOWN ID PANEL, INTEGRATED SLING MOUNTS, BELT KEEPERS



MODEL  
T375030  
T375031  
T375032

SIZE  
MEDIUM  
LARGE  
X LARGE

## DAGGER

- COOL, LIGHTWEIGHT DESIGN WITH IDEAL PAYLOAD CAPACITY
- 4+3 140-ROUND POD HOLDERS (Q-POD COMPATIBLE)
- LARGE FRONT UTILITY POCKET, GRENADE POUCH, FLIP-DOWN ID PANEL, RADIO POUCH, HORIZONTAL TANK POUCH (HOLDS UP TO 92CI. BOTTLE)
- BUILT IN HYDRATION POUCH
- ONE SIZE FITS ALL

MODEL T375029



## SCOUT

- BREATHABLE, LIGHTWEIGHT NYLON-WEBBED MESH BASE
- ADJUSTABLE SHOULDERS AND INTERNAL HARNESS SYSTEM
- 4+2 140-ROUND POD POUCH CONFIGURATION
- TANK POUCH, UTILITY POCKETS, MAP, ID, AND RADIO POUCHES, INTEGRATED SLING MOUNTS & BELT KEEPERS
- ONE SIZE FITS ALL

MODEL T375033



## 2 POINT SLING

- ACCOMMODATES JUST ABOUT ANY PAINTBALL MARKER
- ALLOWS "HANDS-FREE" CONTROL OF YOUR GUN
- MADE FROM SUPER-STRONG WEBBED NYLON

MODEL T275002



## 3 POINT TACTICAL SLING

- UNIVERSAL DESIGN ACCOMMODATES JUST ABOUT ANY MARKER
- ALLOWS SECURE, "HANDS-FREE" CONTROL OF YOUR PAINTBALL GUN
- MADE FROM SUPER-STRONG WEBBED NYLON
- BETTER ADJUSTABILITY AND BALANCE OF MARKER

MODEL T275001





# TIPPMANN APPAREL

## TIPPMANN CHEVRON T-SHIRT

- 100% COTTON (OLIVE)
- MACHINE WASHABLE

MODEL	SIZE
T303028	MEDIUM
T303029	LARGE
T303030	X-LARGE
T303031	XX-LARGE

Package: Bulk



## TIPPMANN X7 LOGO T-SHIRT

- 100% COTTON (BLACK)
- MACHINE WASHABLE

MODEL	SIZE
T303024	MEDIUM
T303025	LARGE
T303026	X-LARGE
T303027	XX-LARGE

Package: Bulk



## TIPPMANN SKULL T-SHIRT

- 100% COTTON (OLIVE)
- MACHINE WASHABLE

MODEL	SIZE
T303020	MEDIUM
T303021	LARGE
T303022	X-LARGE
T303023	XX-LARGE

Package: Bulk



## TIPPMANN LOGO T-SHIRT

- 100% COTTON (BLACK)
- MACHINE WASHABLE

MODEL	SIZE
A-TBM	MEDIUM
A-TBL	LARGE
A-TBXL	X-LARGE
A-TBXXL	XX-LARGE

Package: Bulk



## TIPPMANN LOGO CAP

- 100% COTTON
- MACHINE WASHABLE

MODEL	SIZE
-------	------

### SKULL (GREEN)

T303032	SMALL/MEDIUM
T303033	LARGE/XL

### TIPPMANN LOGO (BLACK)

T303034	SMALL/MEDIUM
T303034	LARGE/XL

Package: Bulk



